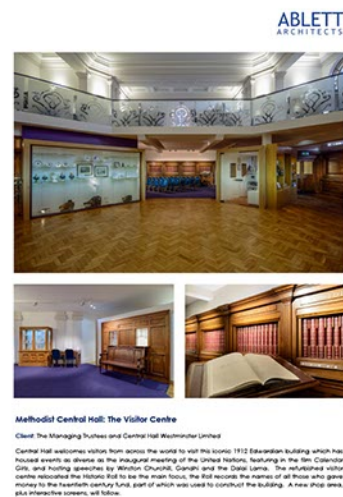
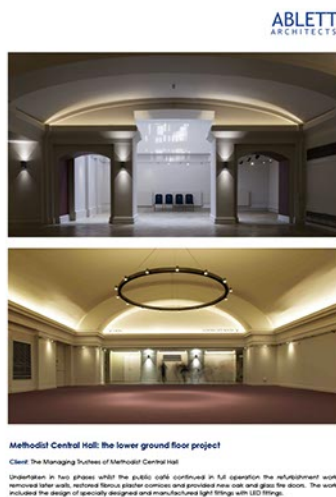


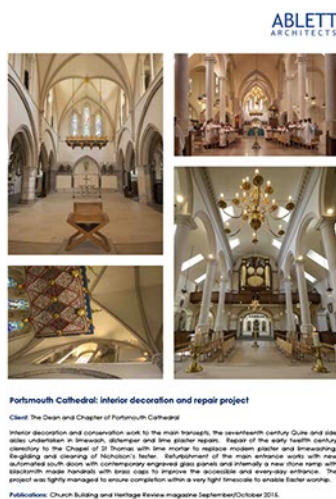
Lambeth Palace Library Lollards' Tower repairs.pdf

Lambeth Palace Library The Great Hall repair project.pdf



Methodist Central Hall the lower ground floor project.pdf

Methodist Central Hall The Visitor Centre.pdf



Portsmouth Cathedral interior decoration and repair proje...

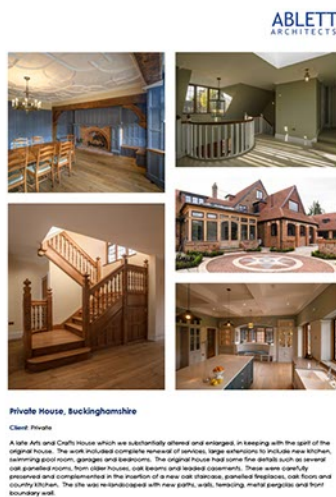
Portsmouth Cathedral roofing projects.pdf



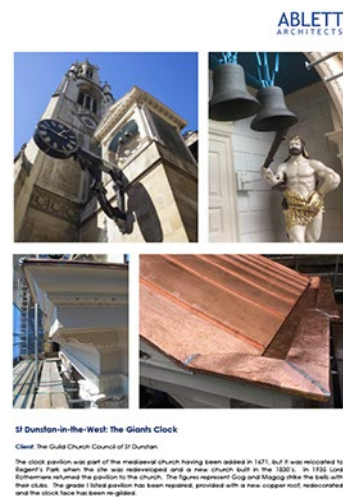
Portsmouth Cathedral Tower and Chancel repair project...



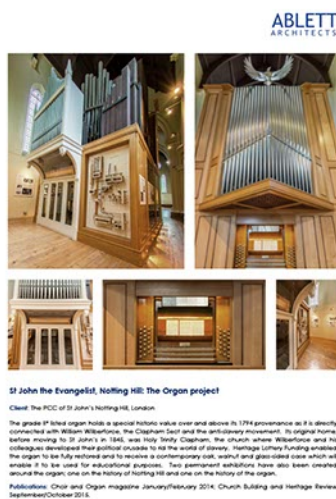
Private House, Buckinghamshire A.pdf



Private House, Buckinghamshire B.pdf



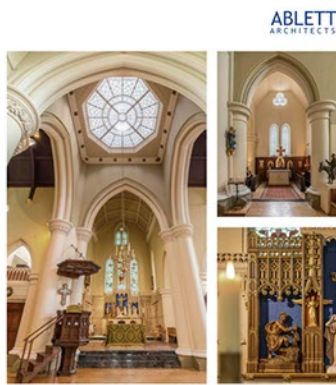
St Dunstan-in-the-West The Giants Clock.pdf



St John the Evangelist Notting Hill The Organ project.pdf



St John the Evangelist Notting Hill The West End project....



**St John the Evangelist, Notting Hill: various projects**

**Client:** The PCC of St John's Notting Hill, London

The masterpiece has been realised in a number of projects, including new equal access with new exterior stone and porch gates, the restoration of the Chancel with new steps and mosaic decoration, creation of multi-use rooms for church and community use to the west end with toilet and a kitchen, the restoration of the organ with a new case (funded by the Heritage Lottery Fund) and the creation of a Lady chapel.

**Publications:** Choir and Organ magazine January/February 2014, The Victorian Church reordering, in search of good practice, July 2014, Church Building and Heritage Review September/October 2013 and also January/February 2014.

St John the Evangelist Notting Hill various projects.pdf



**The Barber Rooms, All Saints' Faringdon, Oxfordshire**

**Client:** The PCC of All Saints Church

Design of new parish rooms to the north side of the church with a large hall that can be subdivided with sliding folding partitions, lots of storage for vicarage equipment and chairs, fully fitted kitchen, store, boiler house and toilet. Link to the medieval church by restoring a long neglected doorway. Restoring work involved excavation and re-entombment of human remains. Designed in a simple and modern idiom and constructed using of brick frame clad with boarding and with a cedar shingle roof. Highly insulated and energy efficient, maximum use of daylight and low maintenance.

The Barber Rooms All Saints' Faringdon Oxfordshire.pdf